

LT | KLEAN-AGRO™

CATALOGUE #1

**A COMPLETE RANGE OF
EFFICIENT AND TRUSTED PRODUCTS**
DEDICATED TO ANIMAL HEALTH PROFESSIONALS



LT KLEAN-AGRO BY

LIPHATECH
GROUPE DE SANGOSSE

LIPHATECH, A WORLDWIDE COMPANY
STRIVING TO BUILD SUSTAINABLE RELATIONSHIPS
WITH EVERY CUSTOMER BASED ON
LOYALTY, PROXIMITY AND TRUST.



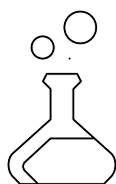
WORLDWIDE EXPERT IN RODENT CONTROL

For **more than 50 years**, LIPHATECH has developed efficient and innovative solutions for rodent control on worldwide professional and H&G markets.

LIPHATECH made the strategic choice to mobilize all required resources to bring to market efficient solutions in line with regulations, environmental and societal expectations.

LIPHATECH heavily relies on an ambitious research program called NEORAMUS to keep on bringing innovation to the rodent control world.

** Program supported by BpiFrance : ISI N°I1301001W «NEORAMUS».*



Expert in baits formulation and manufacturing

- › Products designed in our R&D centre
- › Expertise in industrial and formulation process with a precise Spec of raw materials to ensure high quality bait production
- › Recognized palatability and efficiency



Expert in rodents biology

- › From active substance to on-site control
- › Historical partnership with VetAgroSup, Veterinary university of Lyon - France, on wild rodents, health risks and rodent populations control studies

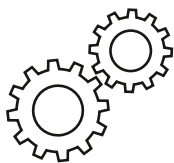


Expert in biocides regulation

- › Worldwide owner of registration dossiers for active substances and products
- › Information and support of our customers on regulatory evolutions on every market

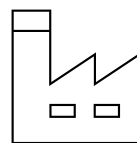


A FULL SERVICE FOR A COMPLETE AND REASONED CONTROL



Marketing support

- › Products offers according to customers needs
- › Packagings meeting every market requirements



A close technical support

- › Advise for control strategy, training for product application in good operating practices
- › Field support, on-sites diagnosis



High performance industrial production tools

- › 2 plants : one in France and one in the USA
- › Exclusive industrial processes on the market
- › Full tracking and guaranteed quality
- › Capacity to cater rapidly for market's fluctuating needs (flexibility of our plants)



Committed specialists teams

- › A specialized commercial team with a short reaction time
- › Dedicated Regulatory Team
- › Collaboration at all levels with industry stakeholders with regards to stewardship initiatives of CS3D - CEPA

KEY FIGURES

3 out of 8

› discovered active substances*

+ than 10%

› of turnover devoted to **R&D**

+ than 200

› worldwide authorisations

2

› production plants

*anticoagulant vitamin K1 major active substances

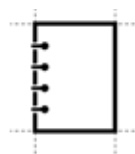


PROCESS

A UNIQUE, HIGH-PERFORMANCE
MANUFACTURING PROCESS

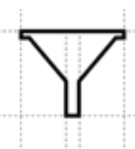
Regulatory compliance

1 OUR REQUIREMENTS RAW MATERIALS



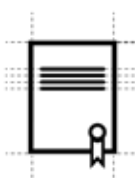
RIGOUR

Our raw materials specifications impose quality standards that are the same or exceed those of the agrifood industry.



SELECTION

Flours and cereals are subject to calibration for the automatisisation of our industrial processes, which ensures consistent quality in the finished products.



CERTIFICATION

Every shipment received has an analysis certificate that is checked by Quality Control to ensure compliance with the specifications.

Note :

Each year, LIPHATECH rejects on average more than one lorry load of non-compliant raw materials.

ACCEPTANCE BY THE MANUFACTURING PLANT

OUR APPROACH

compliance / Social responsibility / Safety for operators and processes

2 OUR EXPERTISE MANUFACTURING



REGISTERED FORMULATIONS

All LIPHATECH product formulations include more than 10 ingredients. They are unique and protected, making our baits unique on the market.



PERFORMANCE

LIPHATECH's industrial technologies are automated and operate continuously to obtain a consistent concentration of active substances. The raw materials are intensively mixed for an improved final texture that is even more palatable.



COMPLIANCE

All our products are subject to continuous quality checks from manufacturing to packaging to achieve state of the art final quality.

MARKETING

3 OUR ADDED VALUE YOUR SUCCESS



PREMIUM QUALITY

Consistent effective products that comply with all regulations.



SAFE TO USE

Constant optimisation of safety features makes for final products use (dust content close to 0%, system to secure the baits, etc.)



RESULTS

Optimum rodent control. Faster and easier worksite management.

OUR FORMULATIONS & INDUSTRIAL TECHNOLOGIES

LIPHATECH has developed three main types of formulation to provide solutions **for any situation** in any environment.

For each type of formulation, LIPHATECH has implemented **specific industrial technologies** that maximise bait palatability and effectiveness.

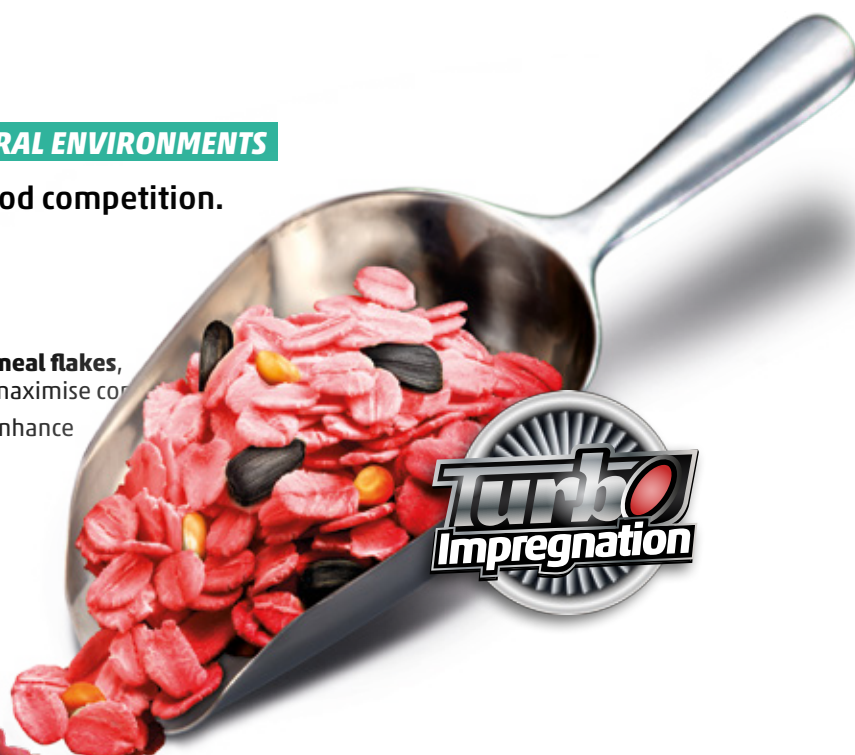
CEREALS

THE MOST COMPETITIVE IN RURAL ENVIRONMENTS

Cereals are ideal for strong food competition.

MULTI MIX

- A unique mix with **EXTRA quality oatmeal flakes**, enriched with corn and sunflower to maximise competition.
- The oatmeal is specially prepared to enhance palatability of the cereal.



WHEAT TECH®

A unique wheat on the market.

Specific, carefully calibrated wheat that is prepared before going through turbo impregnation to optimise its effectiveness.

No product loss :

- Germination rate close to **0 %**
- Dust content **< 0,1 %**



INDUSTRIAL TECHNOLOGY

Turbo Impregnation

Technology developed by LIPHATECH.

Exclusive on the market!

A system that ensures continuous and homogenous impregnation of all grains.

SOFT BAIT

THE MOST PALATABLE

LIPHATECH soft bait is recognized by customers as the most palatable on the market.

The soft bait formulation includes

100% plant-based fats.

These fats are used as flavour enhancers: they increase the olfactory-gustatory characteristics of the bait and make it even more palatable.

Using a precise amount of ingredients, the bait is fresh but not sticky:

- Limited release of fats (the bait remains palatable).
- Excellent performance over time.
- Clean handling. The soft bait is packaged in a porous pack that allows the cereal scent to be released.



INDUSTRIAL TECHNOLOGY

Turbo Mixing

Intensive mixing technique for cereals, fats and other ingredients for a **unique texture!**



BLOCKS

THE MOST VERSATILE

The LIPHATECH block offers excellent durability in all situations.

The blocks are available in several shapes based on use: dry, protected areas or damp environments such as sewers.

All blocks can be wrapped for **maximum durability** and pierced to be secured in place.



INDUSTRIAL TECHNOLOGY

Turbo Extrusion

An original thermomechanical manufacturing process that gives bait a double texture:

BLOCK INTERIOR

The special mixing technique gives the block an aerated texture.

BLOCK EXTERIOR

The exterior is compressed to make the bait extremely resistant to temperature variations, mould and humidity.

SOFT BAIT

PROCESS



A UNIQUE, HIGH-PERFORMANCE MANUFACTURING PROCESS, FOR GUARANTEED EFFICIENCY

STRONG ATTRACTIVENESS AND PALATABILITY

Using a precise amount of ingredients, the bait is fresh but not sticky and is packaged in a porous pack that allows the cereal scent to be released



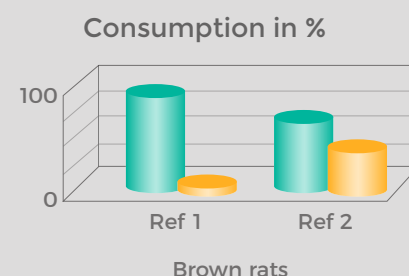
ALL PLACES

EXCELLENT TEXTURE

The bait remains fresh with a limited release of fat

SHOCK EFFECT WITH SMALL DOSE

PALATABILITY TEST



LIPHATECH SOFT BAIT

Competitors reference

Tests performed under controlled laboratory conditions

FAT RELEASE TEST

PROTOCOL

Pastes are placed on a cardboard at room temperature (20°C).

Fat release is observed at 24h to 48h. During this laps of time we are able to characterise fat release.

RESULTS



LIPHATECH SOFT BAIT



REF 1 COMPETITOR



REF 2 COMPETITOR

1 ▶ BROWN RAT // 2 ▶ ROOF RAT // 3 ▶ MICE

LT KLEAN-AGRO SOFT BAIT

Difethialone 25 ppm / Contains Bitrex*

Shelf life : 4 years



FAST ACTION



EFFICIENT EVEN ON
HIGH INFESTATION



EASY TO APPLY
Sachet 10g

Shelf life : 2 years

LT KLEAN-AGRO SOFT BAIT

Bromadiolone 50 ppm / Contains Bitrex*



ACTIVE SUBSTANCE
ROTATION



VERY EFFICIENT
ON ROOF RATS



Illustration non-contractual

+ ANTIDOTE : VITAMINE K1

+ Bitrex®, a bittering agent that reduces the risk of consumption by human.

*Bitrex is a Registered Trademark of Macfarlan Smith Limited.

CONTENTS

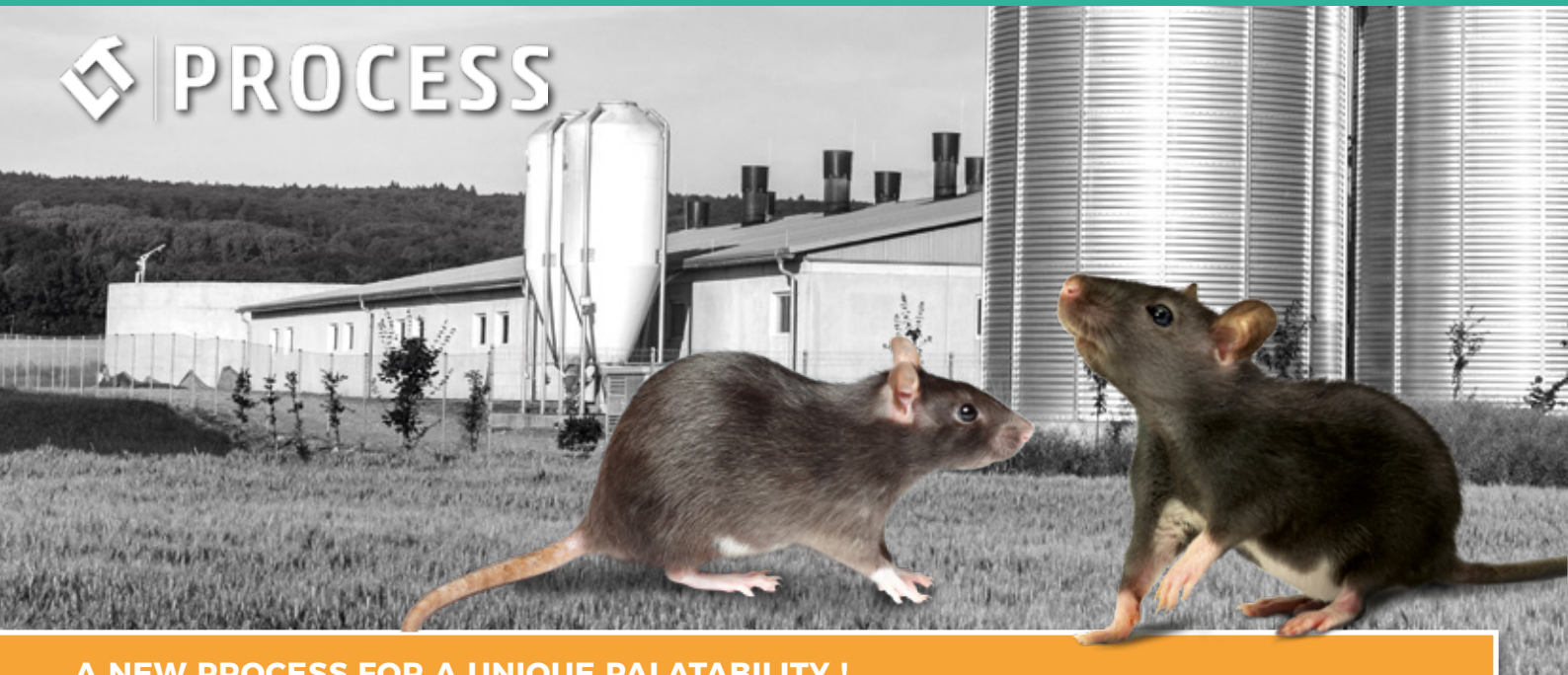
	PACKAGING	PALLET 100x120
Sachet 10g	3 Kg bucket	160 buckets
Sachet 10g	5 Kg bucket	120 buckets



ALWAYS APPLY BAIT IN A SECURE BAIT BOX

WHEAT TECH®

PROCESS



A NEW PROCESS FOR A UNIQUE PALATABILITY !



ALL PLACES

EFFICIENT RAT AND MICE

Flexibility thanks to the preparation of wheat before Turbo Impregnation.



STABLE MOISTURE

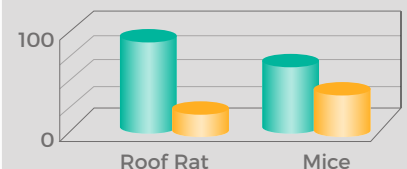
Germination rate close to 0%

STRONG PALATABILITY

Specific, carefully calibrated wheat

PALATABILITY TEST

Consumption in %



Legend:
● LIPHATECH WHEAT TECH®
● Competitors reference

Tests performed under controlled laboratory conditions

GERMINATION TESTS

PROTOCOL

LIPHATECH WHEAT TECH® and standard wheat were placed in petry plate in humid environment for 3 days at ambient temperature (20°C). (Laboratory tests)

RESULTS



COMPETITOR
REFERENCE



LIPHATECH WHEAT
TECH®

LT KLEAN-AGRO WHEAT TECH®

Difethialone 25 ppm / Contains Bitrex*

Shelf life : 4 years & 7 months



FAST ACTION



RECOMMENDED IN SITUATION OF STRONG FOOD COMPETITION



FLEXIBLE USE : indoor and around building

LT KLEAN-AGRO WHEAT TECH®

Bromadiolone 50 ppm / Contains Bitrex*

Shelf life : 1 year



ACTIVE SUBSTANCE ROTATION



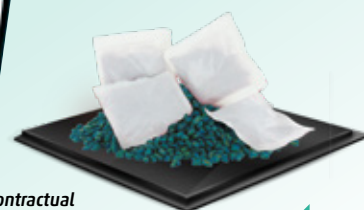
FLEXIBLE USE : indoor and around building



HIGH PALATABILITY



Illustration non-contractual



Shelf life : 2 years

LT KLEAN-AGRO WHEAT TECH®

Chlorophacinone 50 ppm / Contains Bitrex*



ACTIVE SUBSTANCE ROTATION



FLEXIBLE USE : indoor and around building

Illustration non-contractual

+ ANTIDOTE : VITAMINE K1

+ Bitrex®, a bittering agent that reduces the risk of consumption by human.

*Bitrex is a Registered Trademark of Macfarlan Smith Limited.

CONTENTS

	PACKAGING	PALLET 100x120
Sachet 25g T-Perf	5 Kg bucket	120 buckets
Loose bait	6 Kg bucket	160 buckets
Loose bait	10 Kg bag	56 bags

ALWAYS APPLY BAIT IN A SECURE BAIT BOX



MULTI MIX

PROCESS



A UNIQUE BLEND WITH EXTRA QUALITY OATMEAL FLAKES FOR HIGH PALATABILITY

HIGH PALATABILITY

Specific technology on oat flakes

TRIPLE ACTION

Multi Mix formulation (flakes oat-sunflower-corn). Ideal against feeding aversion



SHOCK EFFECT

The oatmeal is specially prepared to enhance cereal palatability

DRY PLACES

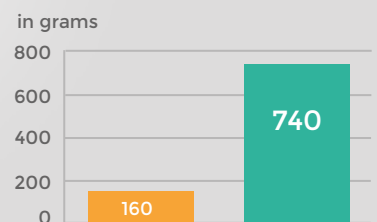
Inside barn and livestock facilities

TEST

PROTOCOL

- Multi Mix and classic oat were placed separately in a same bait station
- Bait consumption was checked every 3 days and reloaded with fresh bait
- By placing them alternatively on left and on right

PALATABILITY TEST



● LIPHATECH MULTI MIX
● Bromadiolone Oat

MULTI MIX

4X MORE CONSUMPTION THAN BROMADIOLONE OAT

(Tests performed under controlled laboratory conditions)

LT KLEAN-AGRO MULTI MIX

Difethialone 25 ppm / Contains Bitrex*

Shelf life : 2 years



FAST ACTION



**RECOMMENDED IN
DRY AREAS**



**HIGH EFFICIENCY
ON ROOF RATS**

Illustration non-contractual

+ ANTIDOTE : VITAMINE K1

+ **Bitrex®**, a bittering agent that reduces the risk of consumption by human.

*Bitrex is a Registered Trademark of Macfarlan Smith Limited.

CONTENTS

	PACKAGING	PALLET 100x120
Loose bait	5 Kg bucket	120 buckets
Loose bait	10 Kg bags	56 bags



ALWAYS APPLY BAIT IN A SECURE BAIT BOX

BLOCK



THE MOST VERSATILE AND EFFICIENT BAIT

THE BEST BALANCE BETWEEN PALATABILITY AND PROTECTION

STRONG ATTRACTIVENESS

Cereal of high quality.
Patented design with several angles
for better gnawing by rodent

HOLED BLOCK

To be secured in the bait box

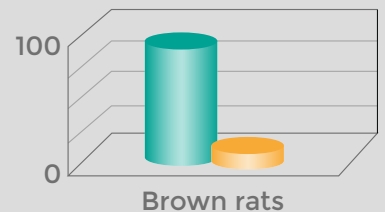
IDEAL MOIST PLACES

Strong persistence
to mold and
humid conditions



PALATABILITY TEST

Consumption in %



Legend:
● LIPHATECH BLOCK
● Competitor reference

(Tests performed under controlled laboratory conditions)

STABILITY TESTS IN HUMID CONDITIONS

PROTOCOL

Daily monitoring of mold development
in these conditions (humidity and temperature)

(Laboratory tests)

RESULTS

30°C/90% Relative Humidity

J+7



J+11



COMPETITOR REFERENCE

LIPHATECH BLOCK



LT KLEAN-AGRO BLOCK

Difethialone 25 ppm / Contains Bitrex*

Shelf life : 3 years



FAST ACTION



STABLE FORMULATION



SPECIAL HUMID SITES

Shelf life : 2 years

LT KLEAN-AGRO BLOCK

Chlorophacinone 50 ppm / Contains Bitrex*



ACTIVE SUBSTANCE ROTATION



FIRST STEP TREATMENT



FLEXIBLE USE :
indoor and around
building



Illustration non-contractual

+ ANTIDOTE : VITAMINE K1

+ Bitrex®, a bittering agent that reduces the risk of consumption by human.

*Bitrex is a Registered Trademark of Macfarlan Smith Limited.

CONTENTS

	PACKAGING	PALLET 100x120
20g unwrapped	5 Kg bucket	65 buckets
25g unwrapped	5 Kg bucket	65 buckets



ALWAYS APPLY BAIT IN A SECURE BAIT BOX

AEGIS®

ENGINEERED TO LAST!
SPECIFIC ENGINEERING SOLUTIONS
LIPHATECH INVESTS IN DESIGNING ROBUST BAIT STATIONS

SECURED SOLUTIONS AEGIS BAIT STATIONS



AEGIS® MINI COMPACT



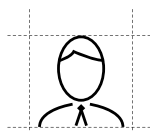
Master Key

Made in France



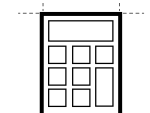
AEGIS® PRO MOUSE

1 DESIGN



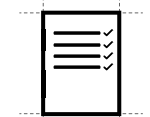
EXPERTISE

Bait stations designed in partnership with **a specialised firm**.



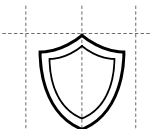
EVALUATION

Industrial pilot projects used to validate feasibility and costs.



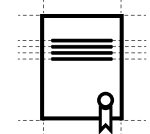
TESTS

Pilot bait stations are tested and approved under field conditions.



PROTECTION

TAMPER Resistance tests conducted with children and non-target species by a certified laboratory.



CERTIFICATION

UNIQUE PATENT PENDING.

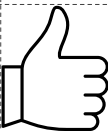
SECURED AND MECHANICAL SOLUTIONS

2 TECHNICAL PERFORMANCES



STURDINESS

Stations that are durable, cleanable and re usable.



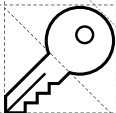
EFFICIENCY

Bait is effectively protected from hard weather conditions, dust and temperature variations.



PROTECTION

Systems to secure the bait to avoid dispersion and primary poisoning.



CONVENIENT

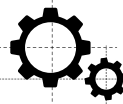
Quick opening and closing system.



AEGIS® TRAP RAT

MECHANICAL
SOLUTION

3 PRACTICAL BENEFITS



PERFORMANCE

Easy access to bait via a dual entrance tunnel for faster consumption.



DURABILITY

Effective pest control over time.



PROTECTION

Safe for users and non-target species.



EFFICIENCY

Faster to use.



ECONOMICAL

Economical gain: durable stations designed with robust materials to last a long time.

INSTRUCTION MANUAL



Primed trap



Rodent caught

TRAINING & INFORMATION OUR PRIORITIES

LT KLEAN- BOOST YOU

TRAIN YOUR SALES FORCE

- ✚ Technical tips
- ✚ Product information
- ✚ Best practices
- ✚ Regulatory



Training tool
according to the cattle's type

- 4 guides :
- Protection of grain storage facilities
 - Protection of cattle farm
 - Protection of layer farm
 - Protection of swine farm

Illustration non-contractual

Header

leaflet



Desk writing pad



Technical
Sheets

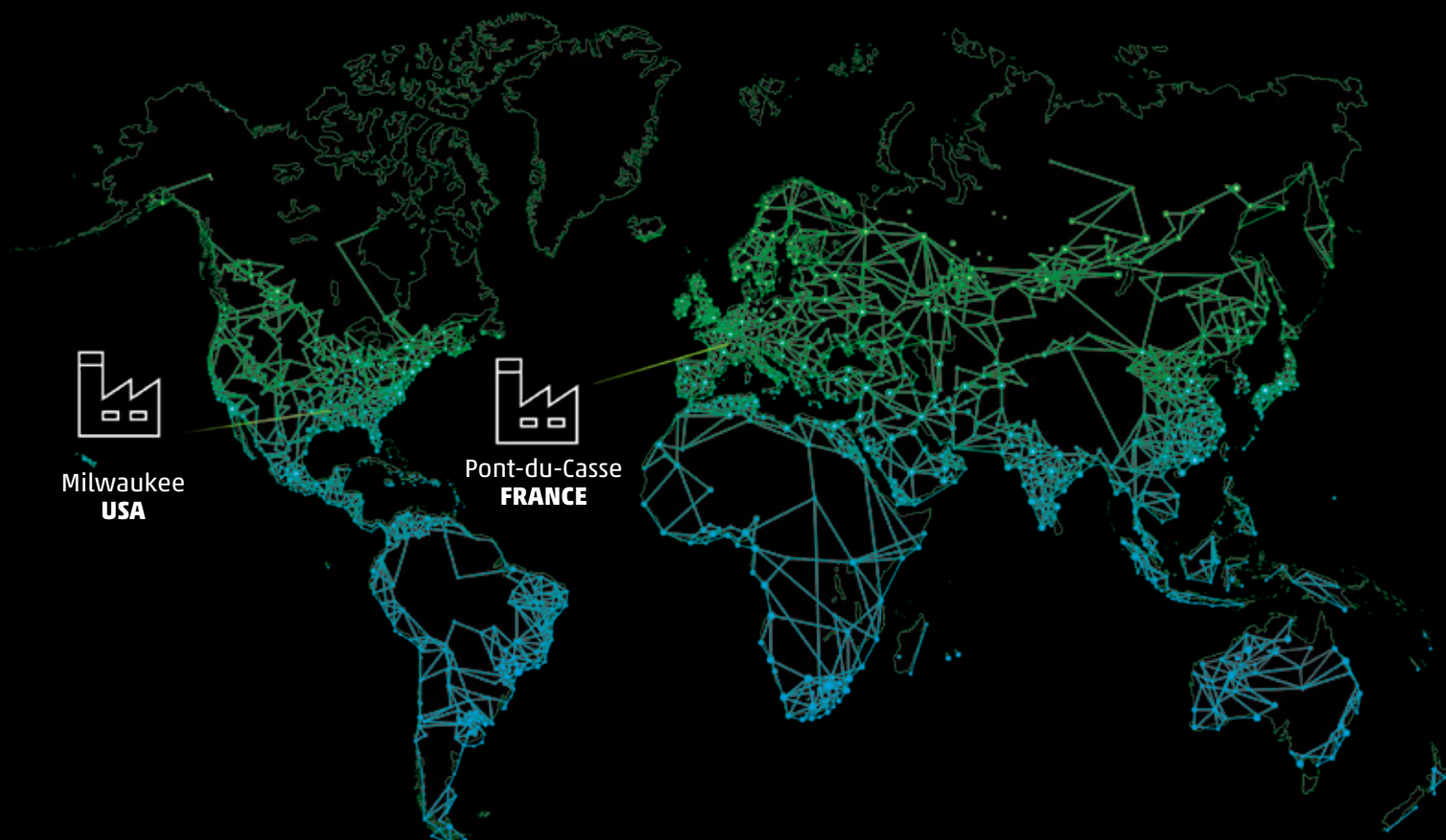


Headband of
making

LIPHATECH

— GROUPE DE SANGOSSE

WORLDWIDE



The conditions of use vary from a country to another. Please contact us or refer to the specific regulatory information available in your country and related to the authorisation of our products.

Use biocides safely. Always read the label and product information before use.

GENERAL CONDITIONS OF USE OF THIS DOCUMENT (hereinafter the "Document")

Difethialone products : Warning, H373 - H412 / Bromadiolone products : Danger, H360D, H372 / Chlorophacinone products : Danger, H360D

Edition December 2018. Replaces and supersedes any and all prior editions. LIPHATECH reserves the right to modify this Document at any time.
The reader/user of this Document is supposed to verify, before any use, that the edition available to him is the last updated one. (contact@liphatech.fr).

This document is not an official and contractual document. It shall not be considered as a commercial offer or a warranty of any level of efficacy of the products. The information contained herein shall not be considered as specifications or recommendations of use of the products.
This information is based on the data existing at the date of the edition of this Document and only indicative. Any total or partial use, diffusion, or reproduction of this Document is subject to the prior written consent of LIPHATECH and must be done in accordance with the relevant law and regulation. All logos, tradenames, slogans, trademarks mentioned in this Document are protected by intellectual property rights. Any right of use is subject to the prior written consent of their respective owners.

The sale of LIPHATECH's products and material mentioned in this document are governed by the General Conditions of Sale of LIPHATECH.
Any purchaser is supposed to verify the G.C.S in force at the date of the order by contacting LIPHATECH or visiting www.liphatech.fr website

® Brands registered LIPHATECH © Copyright 2018

LIPHATECH - S.A.S au capital de 2.800.000€ - Bonnel - CS10005 - 47480 PONT DU CASSE - FRANCE - 442 688 206 R.C.S. AGEN
Tél. : +33 05 53 69 35 70 - E-mail : contact@liphatech.fr