

# PROFESSIONAL AND CONSUMER RANGES

## RODENT CONTROL



# GENERATION<sup>®</sup>

## Striking power

# LIPHATECH<sup>®</sup>

— GROUPE DE SANGOSSE

Use biocides safely. Always read the label and product information before use.  
GENERATION<sup>®</sup> is a Registered Trademark of LIPHATECH SAS



# GENERATION PRODUCT RANGE

LIPHATECH, the world's leading developer of pest control products, belongs to the DE SANGOSSE group which sustains know-how in the fields of Agriculture, Home and Garden, and Pest Control. At LIPHATECH, we are protecting people and property from unwanted pests and more specifically from rodents, a major sanitary and economic challenge on a global scale. LIPHATECH uses advanced chemistry, biology and technology to improve the quality of life.

At LIPHATECH, we are not only scientists, biologists and marketers, but also problem solvers. We understand the issues facing pest management professionals who service the professional, animal health, agricultural and consumer markets and use our insight to develop new technologies and solutions. From bait stations to AVK solutions through alternative methods and traps, LIPHATECH aims at providing its worldwide customers with efficient products - either bringing them ourselves to market or through strategic partnerships.

## DIFETHIALONE

- /// 20 years of proven efficiency.
- /// The most innovative active substance on the biocidal market, efficient **at 25ppm**.
- /// Shock Effect: **single feed**.
- /// Efficient on rats and mice including resistant ones.
- /// Ideal on high infestations.

APPROVED  
**25**  
ppm  
Difethialone



Made in France



## SOFT BAIT



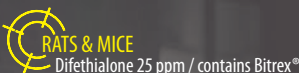
### HIGHEST PALATABILITY FOR ENHANCED PERFORMANCES ON RATS AND MICE, COMPETE WITH ANY KIND OF FOOD

Ready to use - Easy to spike, rod and replace - Clean, with limited fat release - Non dispersible  
10g sachets : flexible and easy to dose, with integrity preserved under warm or cold conditions.  
Flavour dispersion granted by the sachet for more palatability.



### TO CONTROL THE MOST INTRUSIVE RODENTS IN DRY AND SHELTERED SITES

To manage rodent populations when control visits are close.  
Alternative to existing baits whose consumption is too low.  
For the most challenging sites - In dry and sheltered sites.  
Places with processed, stored or prepared food.



## BLOCK



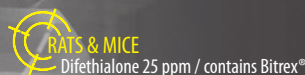
### BEST BALANCE BETWEEN PALATABILITY AND LONG LASTING

Processed with whole grains to improve consumption - Excellent stability in difficult conditions : high resistance to moisture and dust.  
Ready to use with flexible dose - Can be wrapped to increase protection against moisture, dust, slugs and snails - Non dispersible,  
stable even in wide range of temperatures variations (-15°C to +50°C) - Several gnawing angles adapted to rodent  
handling habits - Easy to spike, rod and replace.



### FOR SITES WITH LIMITED FOOD COMPETITION

Sites where dispersible baits are forbidden.  
Sites with processed, stored or prepared food.



## WHEAT TECH



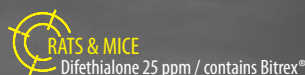
### EASY TO USE, STABILITY AND NO SPILLAGE

Exists in bulk (for professional only) - Available as well in sachet for easier dosage, improved bait protection and limited dispersibility.  
Selected and calibrated grains to make them tastier than other cereals in competition - Safe use : limited dust release.  
Stability : low germination rate - No spillage : quality control to limit impurity level in the final product.  
Better alternative to pelleted baits.



### POLYVALENT AND SUITABLE IN MOST SITUATIONS

In rural environments and farms - In cereal based food competition situations.  
To control all rats populations - Sites where standard cereals baits  
underperform in quality and efficiency.
















**TURBO IMPREGNATION:**  
Innovative impregnation process to  
cover whole grains for a maximized  
consumption of active substance.



Bitrex® is a Registered Trademark of Macfarlan Smith Limited

The authorizations and conditions of use vary from a country to another.  
Please contact us or refer to the specific regulatory information available in your country and related to the registration of our products.

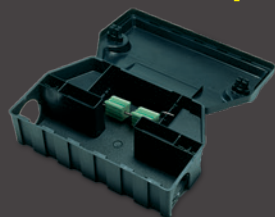
## PACKAGINGS

						
PRO (x pallet)	 BUCKET	5 kg x 80	5 kg x 50	-	6 kg x 80 12 kg x 50	-
	 BOX	15 kg x 40	12 kg x 40	10 kg x 40	-	14 kg x 40
	 BAG	-	-	-	20 kg x 50	-
CONSUMER (x outer carton)	 BOX	Box of 200 g x 12 400 g x 20 800 g x 12	-	Box of 8 blocks (20g)x12 18 blocks (20g)x12	-	Box of 8 sachets (25 g) x 12 12 sachets (25 g) x 12 20 sachets (25 g) x 12 40 sachets (25 g) x 6
	 POUCH	Pouch of 200g x 15 480g x 12	-	-	-	-
	 BLISTER	Blister of 120 g x 12	-	-	-	Blister of 8 sachets (25 g) x 20
	 BUCKET	Bucket of 1,5 kg x 4	-	Bucket of 1,5 kg x 4	-	Bucket of 1,5 kg x 4
	 PREFILLED BOXES	8 boxes x 12 4 boxes x 10	8 boxes x 12 4 boxes x 10	-	-	-

Standard conditionings. For any other specific packaging and conditioning request, please contact our sales department.

## ASSOCIATED PRODUCTS

Use **GENERATION** products in our bait stations.



AEGIS RAT COMPACT



AEGIS MOUSE



UNIVERSAL KEY

**GENERATION®**  
DIFETHIALONE

**AEGIS®**  
SECURED BAIT STATIONS

**MAKI®**  
BROMADIOLONE

**ROZOL®**  
CHLOROPHACINONE

GENERAL CONDITIONS OF USE OF THIS DOCUMENT (hereinafter the "Document")

Edition February 2017. Replaces and supersedes any and all prior editions. LIPHATECH reserves the right to modify this Document at any time. The reader/user of this Document is supposed to verify, before any use, that the edition available to him is the last updated one. (contact@liphatech.fr).

This Document is not an official or contractual document. It shall not be considered as a commercial offer or a warranty of any level of efficacy of the products. The information contained herein shall not be considered as specifications or recommendations of use of the products. This information is based on the data existing at the date of the edition of this Document and only indicative. Any total or partial use, diffusion, or reproduction of this Document is subject to the prior written consent of LIPHATECH and must be done in accordance with the relevant law and regulation.

All logos, tradenames, slogans, trademarks mentioned in this Document are protected by intellectual property rights. Any right of use is subject to the prior written consent of their respective owners.

The sale of LIPHATECH's products and material mentioned in this document are governed by the General Conditions of Sale of LIPHATECH. Any purchaser is supposed to verify the G.C.S. in force at the date of the order by contacting LIPHATECH or visiting [www.liphatech.fr](http://www.liphatech.fr) website.