




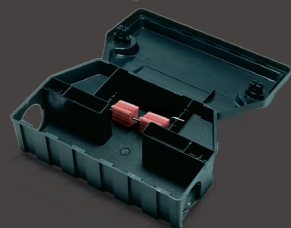
## PACKAGINGS

						
<b>PRO</b> (x-pallet)	 BUCKET	5 kg x 80	5 kg x 50	-	6 kg x 80 12 kg x 50	-
	 BOX	15 kg x 40	12 kg x 40	10 kg x 40	-	14 kg x 40
	 BAG	-	-	-	20 kg x 50	-
<b>CONSUMER</b> (x-outer carton)	 BOX	Box of 400 g x 20 800 g x 12	-	Box of 8 blocks (20g)x12 18 blocks (20g)x12	-	Box of 8 sachets (25 g)x 12 12 sachets (25 g)x 12 20 sachets (25 g)x 12 40 sachets (25 g)x 6
	 POUCH	-	-	-	-	-
	 BLISTER	-	-	-	-	Blister of 8 sachets (25 g) x 20
	 BUCKET	-	-	Bucket of 1 kg x 4	-	Bucket of 1,5 kg x 4
	 PREFILLED BOXES	8 boxes x 12 4 boxes x 10	8 boxes x 12 4 boxes x 10	-	-	-

Standard conditionings. For any other specific packaging and conditioning request, please contact our sales department.

## ASSOCIATED PRODUCTS

Use **ROZOL** products in our bait stations.



AEGIS RAT COMPACT



AEGIS MOUSE



UNIVERSAL KEY

**GENERATION**<sup>®</sup>  
DIFETHIALONE

**AEGIS**<sup>®</sup>  
SECURED BAIT STATIONS

**MAKI**<sup>®</sup>  
BROMADIOLONE

**ROZOL**<sup>®</sup>  
CHLOROPHACINONE

GENERAL CONDITIONS OF USE OF THIS DOCUMENT (hereinafter the "Document")

Edition February 2017. Replaces and supersedes any and all prior editions. LIPHATECH reserves the right to modify this Document at any time. The reader/user of this Document is supposed to verify, before any use, that the edition available to him is the last updated one. (contact@liphatech.fr).

This Document is not an official or contractual document. It shall not be considered as a commercial offer or a warranty of any level of efficacy of the products. The information contained herein shall not be considered as specifications or recommendations of use of the products. This information is based on the data existing at the date of the edition of this Document and only indicative. Any total or partial use, diffusion, or reproduction of this Document is subject to the prior written consent of LIPHATECH and must be done in accordance with the relevant law and regulation.

All logos, tradenames, slogans, trademarks mentioned in this Document are protected by intellectual property rights. Any right of use is subject to the prior written consent of their respective owners.

The sale of LIPHATECH's products and material mentioned in this document are governed by the General Conditions of Sale of LIPHATECH. Any purchaser is supposed to verify the G.C.S. in force at the date of the order by contacting LIPHATECH or visiting www.liphatech.fr website.

LIPHATECH - S.A.S au capital de 2.800.000€ - Bonnel - CS10005 - 47480 PONT DU CASSE - FRANCE - 442 688 206 R.C.S. AGEN  
Tél. : +33 05 53 69 35 70 - E-mail : contact@liphatech.fr

**WWW.LIPHATECH.FR**

# PROFESSIONAL AND CONSUMER RANGES RODENT CONTROL



**ROZOL**<sup>®</sup>  
Power on duty

**LIPHATECH**<sup>®</sup>

— GROUPE DE SANGOSSE

Use biocides safely. Always read the label and product information before use.  
ROZOL<sup>®</sup> is a Registered Trademark of LIPHATECH SAS

BMW COMMUNICATION Credits: Shutterstock<sup>®</sup> and LIPHATECH<sup>®</sup>. Non legally-binding pictures.

# ROZOL PRODUCT RANGE

LIPHATECH, the world's leading developer of pest control products, belongs to the DE SANGOSSE group which sustains know-how in the fields of Agriculture, Home and Garden, and Pest Control. At LIPHATECH, we are protecting people and property from unwanted pests and more specifically from rodents, a major sanitary and economic challenge on a global scale. LIPHATECH uses advanced chemistry, biology and technology to improve the quality of life.

At LIPHATECH, we are not only scientists, biologists and marketers, but also problem solvers. We understand the issues facing pest management professionals who service the professional, animal health, agricultural and consumer markets and use our insight to develop new technologies and solutions. From bait stations to AVK solutions through alternative methods and traps, LIPHATECH aims at providing its worldwide customers with efficient products - either bringing them ourselves to market or through strategic partnerships.

## CHLOROPHACINONE

- /// Safety all year round.
- /// To keep all rodent infestation levels under unacceptable threshold.
- /// Most suitable solution for a **perimeter baiting strategy**.
- /// With recognized powerful LIPHATECH active substance **Chlorophacinone at 50ppm**.



## SOFT BAIT

- + OPTIMIZED CONSUMPTION IN EVERY SEASON**  
Highest palatability to be the first food consumed when rodents enter a site - Ready to use - Non dispersible - 25g sachets : flexible and easy to dose, with integrity preserved under warm or cold conditions - Easy to spike, rod and replace - Clean, with limited fat release - Odour dispersion enhanced by the sachet for more palatability. Maximized consumption for a great efficiency with only few bites.
- ✓ TO PROTECT A SITE CONTAINING A LOT OF ALTERNATIVE FOOD SOURCES**  
Protects efficiently sites with rodent proofing infrastructure in place. Technical cupboards, offices, households and warehouses. In dry and sheltered sites - Ideal in mice potential pathways (suspended ceilings, electric sheath for example...).



**RATS & MICE**  
Chlorophacinone 50 ppm  
Contains Bitrex®

## BLOCK

- + EXCELLENT STABILITY IN DIFFICULT CONDITIONS: HIGH RESISTANCE TO MOISTURE AND DUST**  
Processed with whole grains to improve consumption - Best balance between palatability and long lasting - Available in different formats for more savings and comfort in application - Holed for easy fixation in bait stations - Can be wrapped to increase protection against moisture, dust, slugs and snails - Non dispersible, stable even in wide range of temperature variations - Several gnawing angles adapted to rodent handling habits - Easy to spike, rod and replace.
- ✓ SITES WHERE DISPERSIBLE BAITS ARE FORBIDDEN**  
To manage rodent populations with maintained long term high palatability especially when control visits are distant in time. Outdoors where food competition is limited and infrastructures are rodent proof. To create a shield effect against rodents.



**RATS & MICE**  
Chlorophacinone 50 ppm  
Contains Bitrex®

## WHEAT TECH

- + EASY TO USE, STABILITY AND NO SPILLAGE**  
Exists in bulk (for professional only) - Available as well in sachet for easier dosage, improved bait protection and limited dispersibility. Selected and calibrated grains to make them tastier than other cereals in competition. Easy to use : limited dust release - Stability : Low germination rate. No spillage : Quality control to limit impurity level in the final product.
- ✓ IN RURAL ENVIRONMENTS AND FARMS**  
In cereal based food competition situations. Polyvalent and suitable in most standard situations.



**RATS & MICE**  
Chlorophacinone 50 ppm  
Contains Bitrex®

**TURBO IMPREGNATION:**  
Innovative impregnation process to cover whole grains for a maximized consumption of active substance.

## PELLET

- + WITH SELECTED FLOUR RAW MATERIALS FOR A GREAT PALATABILITY**  
Optimized impregnation of whole pellet to maximize active substance consumption - Exists in bulk (for professional only) - Available as well in sachet for easier dosage, improved bait protection and limited dispersibility - 30 years of experience in pellets bait manufacturing - Highly stable in wet environments : stability - Limited dust release. Quality control to limit impurity level in the final product : no spillage.
- ✓ TO COMPETE WITH CEREAL OR FLOUR BASED ALTERNATIVE FOOD SOURCES**  
The advantages of a cereal bait without its limitations (such as germination or grains peeling). In cereal based food competition situations. In rural environments and farms. Alternative to standard cereal baits.



**RATS & MICE**  
Chlorophacinone 50 ppm  
Contains Bitrex®

Bitrex® is a Registered Trademark of Macfarlan Smith Limited

The authorizations and conditions of use vary from a country to another. Please contact us or refer to the specific regulatory information available in your country and related to the registration of our products.

Made in France